



**Custom Mix Concrete, Inc.**  
*Your Full Service Concrete Supplier*



## **2020 PRECAST CONCRETE PRODUCTS BROCHURE**

### **QUALITY PRODUCTS & SERVICES**



**HEADWALLS 12", 15", 18", 24" & 36"**



**Septic Tanks (500, 1000 & 1500 Gallon Dual Chamber)**



**RETAINING WALL BLOCKS**

**Serving Chemung & Steuben Counties in NY & Bradford & Tioga Counties in PA**  
**Residential, Commercial, Industrial & Municipal Customers**

- **SEPTIC TANKS & DISTRIBUTION BOXES**
- **RETAINING WALL BLOCKS (DECO & PLAIN FACED)**
- **HEADWALLS**
- **CATCH BASINS**
- **DRYWELL TANKS**
- **FRESH WATER TANKS**



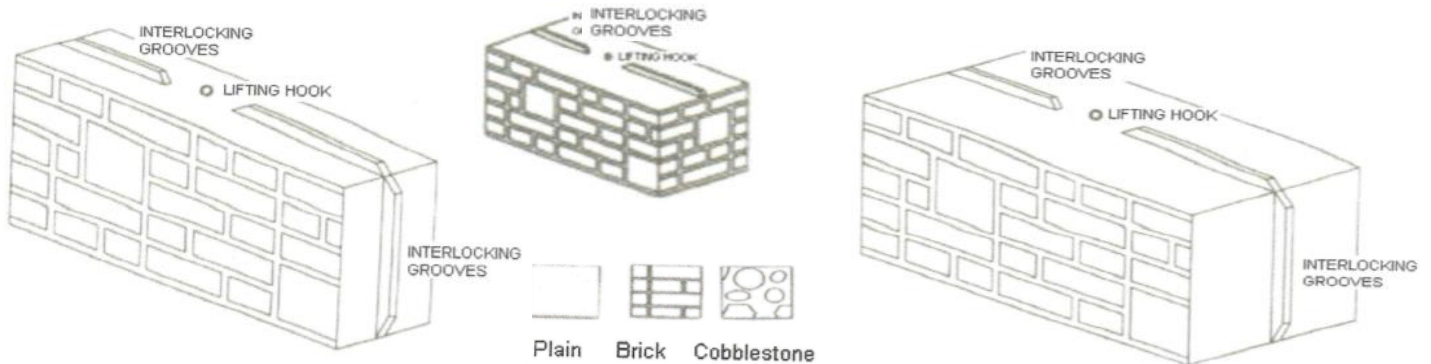
**ADDISON CONCRETE PLANT:**  
**206 W. WATER STREET**  
**ADDISON, NY 14801**  
**PHONE: (607) 359-3436**  
**FAX: (607) 359-3652**

**HOME OFFICE LOCATION:**  
**1229 LOWMAN ROAD**  
**LOWMAN, NY 14861**  
**PHONE: (607) 737-0281**  
**FAX: (607) 737-0349**

# 2020 PRICE SHEET FOR RETAINING WALL BLOCKS



**Custom Mix Concrete, Inc.**  
Your Full Service Concrete Supplier



PLAIN FACED:	DIMENSIONS	WEIGHT	*PRICE	DECO FACED END:	DIMENSIONS	WEIGHT	*PRICE
	2' x 2' x 2'	1140 lbs.	\$ 86.00		2' x 2' x 2'	1140 lbs.	\$ 122.00
	2' x 2' x 4'	2280 lbs.	\$ 104.00		2' x 2' x 4'	2280 lbs.	\$ 132.00
	2' x 2' x 6'	3440 lbs.	\$ 128.00		2' x 2' x 6'	3440 lbs.	\$ 156.00
	2' x 2' x 8'	4600 lbs.	\$ 156.00		2' x 2' x 8'	4600 lbs.	\$ 182.00
	14" x 2' x 2'	700 lbs.	\$ 84.00		14" x 2' x 2'	700 lbs.	\$ 119.00
	14" x 2' x 4'	1400 lbs.	\$ 96.00		14" x 2' x 4'	1400 lbs.	\$ 124.00
	14" x 2' x 6'	2000 lbs.	\$ 120.00		14" x 2' x 6'	2000 lbs.	\$ 141.00
	14" x 2' x 8'	2600 lbs.	\$ 146.00		14" x 2' x 8'	2600 lbs.	\$ 164.00
COBBLESTONE	2' x 2' x 2'	1140 lbs.	\$ 91.00	45° ANGLED BLOCKS:			
OR	2' x 2' x 4'	2280 lbs.	\$ 109.00		2' x 2' x 4'	3300 lbs.	\$ 162.00
BRICK FACED:	2' x 2' x 6'	3440 lbs.	\$ 140.00		14" x 2' x 4'	1970 lbs.	\$ 154.00
	2' x 2' x 8'	4600 lbs.	\$ 169.00				
	14" x 2' x 2'	700 lbs.	\$ 89.00	22° ANGLED BLOCKS:			
	14" x 2' x 4'	1400 lbs.	\$ 105.00		2' x 2' x 4'	2280 lbs.	\$ 129.00
	14" x 2' x 6'	2000 lbs.	\$ 125.00		2' x 2' x 6'	3440 lbs.	\$ 134.00
	14" x 2' x 8'	2600 lbs.	\$ 151.00		2' x 2' x 8'	4600 lbs.	\$ 165.00
2' CONCRETE CAPS	2'	\$ 70.00		* Plus applicable Sales Tax (NY 8%, PA 6%)			
	4'	\$ 80.00		** DELIVERY / HAUL RATES:			
	6'	\$ 90.00		BOOM TRUCK	\$100.00/HR.		
	8'	\$ 100.00		TRACTOR TRAILER	\$125.00/HR.		
14" CONCRETE CAPS	2'	\$ 60.00		**Delivery starts at time of load until time truck gets back to shop.			
	4'	\$ 70.00					
	6'	\$ 80.00					
	8'	\$ 90.00					

DBL MALE	2' x 2' x 2'	1140 lbs.	+ \$26.00/Block
DBL FEMALE	2' x 2' x 4'	2280 lbs.	+ \$26.00/Block
END BLOCKS	2' x 2' x 6'	3440 lbs.	+ \$26.00/Block
	2' x 2' x 8'	4600 lbs.	+ \$26.00/Block

SECONDS: (OUR SECONDS ARE BASED ON AVAILABILITY)

2' x 2' x 4' - \$45.00 + TAX, 2' x 2' x 8' - \$70.00 + TAX

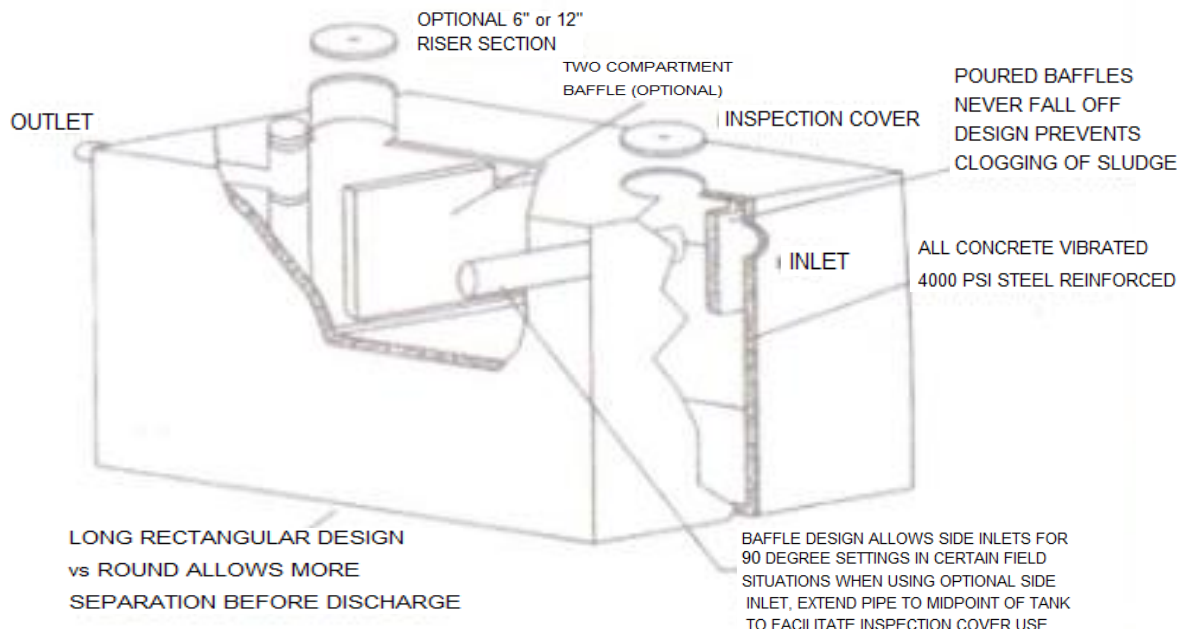
## CONTACT INFORMATION:

President - John Pipher (607) 481-1222  
Concrete Division Manager - Jeremiah Stowell (607) 425-5649  
Sales Representative: Rick Hitchcock (607) 731-9248  
Block Shop Manager: Kelly Crane-Donley (607) 769-7833  
LOCATIONS:  
206 W. Water St. Addison, NY 14801 (607) 359-3436  
1229 Lowman Road, Lowman, NY 14861 (607) 737-0281

# 2020 PRICE SHEET FOR SEPTIC TANKS



**Custom Mix Concrete, Inc.**  
Your Full Service Concrete Supplier



## SPECIFICATIONS:

DESCRIPTION	WEIGHT	LENGTH	WIDTH	HEIGHT	CTR OF INLET	CTR OF OUTLET
500 GALLON	5,500 LBS.	68"	53"	60"	52"	49"
1000 GALLON STANDARD	7,724 LBS.	96"	62"	68"	58"	55"
1000 GALLON - DUAL	7,724 LBS.	96"	62"	68"	58"	55"
1000 GALLON - NEW	8,000 LBS.	99"	68"	60"	52"	49"
1500 GALLON - DUAL	12,500 LBS.	147"	68"	60"	52"	49"

## PRICES:

### HOMEOWNERS

#### 1 - 4 PURCHASED

500 GALLON STANDARD	\$ 750.00 / EACH
1000 GALLON - DUAL	\$ 900.00 / EACH
1500 GALLON - DUAL	\$1,350.00 / EACH

### CONTRACTORS AFTER PURCHASE OF 5 TANKS

\$ 720.00 / EACH
\$ 860.00 / EACH
\$1,300.00 / EACH

DELIVERY CHARGES TO BE ASSESSED SHOULD DISTANCE TO JOBSITE EXCEED TEN (10) MILES. SHOULD ANY JOBSITE CONDITIONS CAUSE DELAYS UPON ARRIVAL, ADDITIONAL CHARGES MAY ALSO APPLY.

## ACCESSORIES:

BIO-FILTERS	\$115.00/EA.
INFILTRATORS	\$60.00/EA.
CAPS	\$20.00/EA.
SPEED LEVELERS	\$2.75/EA.
SEPTIC TANK TAPE	\$28.00/ROLL
SEPTIC TANK COVER (REGULAR LID 24" W x 5" H)	\$ 50.00/EA.
SEPTIC TANK COVER (FLAT LID 30" W x 3" H)	\$ 50.00/EA.
6" & 12" RISER EXTENSIONS (22" W)	\$ 50.00/EA.

SHOWN: 30" WIDE SEPTIC TANK COVER WITH 6" HIGH RISER EXTENSION.



## CONTACT INFORMATION:

President - John Pipher (607) 481-1222  
Concrete Division Manager - Jeremiah Stowell (607) 425-5649  
Sales Representative: Rick Hitchcock (607) 731-9248  
Block Shop Manager: Kelly Crane-Donley (607) 769-7833  
LOCATIONS:  
206 W. Water St. Addison, NY 14801 (607) 359-3436  
1229 Lowman Road, Lowman, NY 14861 (607) 737-0281

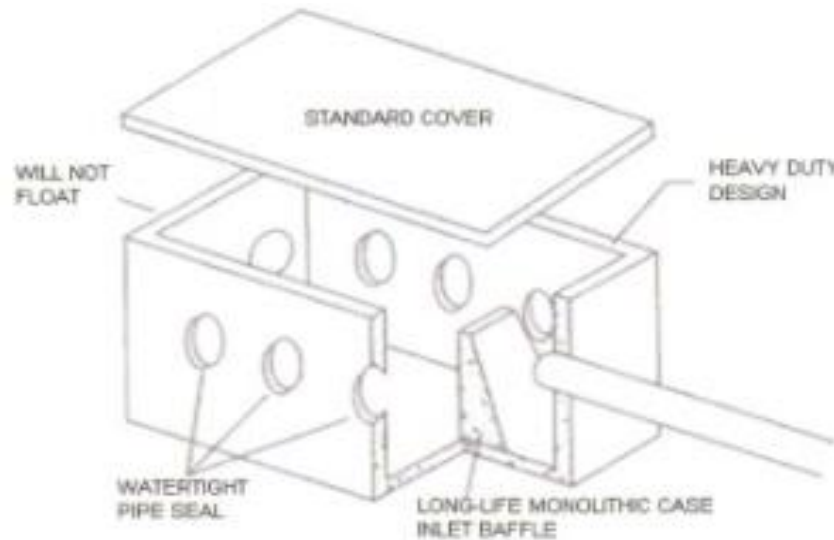
SALES TAX ADDED TO ABOVE COSTS.



# 2020 PRICE SHEET FOR DISTRIBUTION BOXES



**Custom Mix Concrete, Inc.**  
*Your Full Service Concrete Supplier*



SHOWN: 8 OUTLET DISTRIBUTION BOX

## CONCRETE DISTRIBUTION BOXES:

## PRICE

\*6 OUTLET RAISED MOUND DISTRIBUTION BOX

\$ 120.00/EA.

6 OUTLET STANDARD DISTRIBUTION BOX

\$ 120.00/EA.

\*THE HOLES SIT LOWER ON BOX - PAINTED ORANGE IN YARD.

## ACCESSORIES:

BIO-FILTERS	\$115.00/EA.
INFILTRATORS	\$60.00/EA.
CAPS	\$20.00/EA.
SPEED LEVELERS	\$2.75/EA.
SEPTIC TANK TAPE	\$28.00/ROLL

**SALES TAX AND DELIVERY CHARGE ADDED TO ABOVE COSTS.**

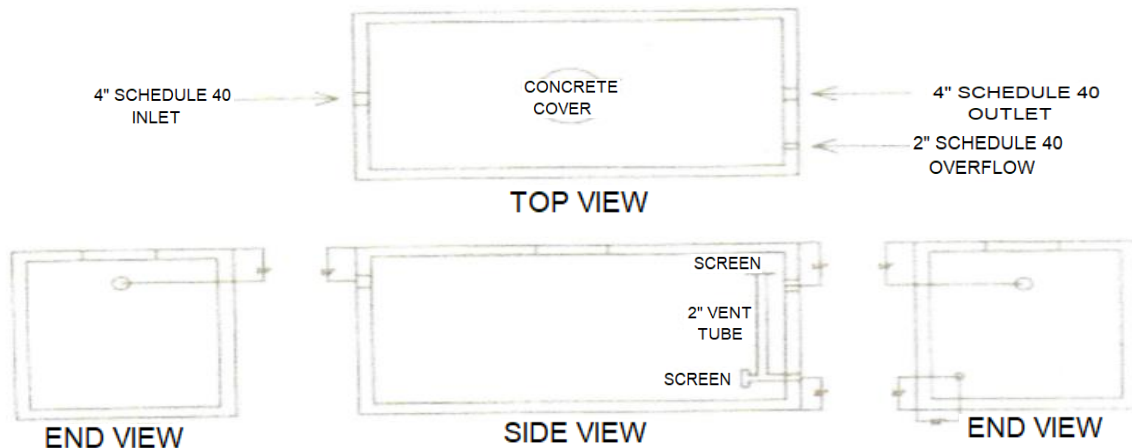
## CONTACT INFORMATION:

President - John Pipher (607) 481-1222  
Concrete Division Manager - Jeremiah Stowell (607) 425-5649  
Sales Representative: Rick Hitchcock (607) 731-9248  
Block Shop Manager: Kelly Crane-Donley (607) 769-7833  
LOCATIONS:  
206 W. Water St. Addison, NY 14801 (607) 359-3436  
1229 Lowman Road, Lowman, NY 14861 (607) 737-0281

## 2020 PRICE SHEET FOR FRESH WATER TANKS



**Custom Mix Concrete, Inc.**  
*Your Full Service Concrete Supplier*



**SHOWN: FRESH WATER TANK**

### DIMENSIONS

	<u>LENGTH</u>		<u>WIDTH</u>		<u>HEIGHT</u>		<u>WEIGHT</u>		<u>PRICE</u>
FRESH WATER TANK	96"	x	62"	x	68"		7,724 LBS.		\$ 810.00/EA.

SALES TAX AND DELIVERY CHARGE ADDED TO ABOVE COSTS.

<b>*DELIVERY</b>	<b>HOURLY RATE</b>
<b>BOOM TRUCK</b>	<b>\$100.00 /HR.</b>
<b>TRACTOR TRAILER</b>	<b>\$125.00 /HR.</b>

\*Delivery Starts at time of load to time truck gets back to our shop.

### CONTACT INFORMATION:

President - John Pipher (607) 481-1222  
Concrete Division Manager - Jeremiah Stowell (607) 425-5649  
Sales Representative: Rick Hitchcock (607) 731-9248  
Block Shop Manager: Kelly Crane-Donley (607) 769-7833

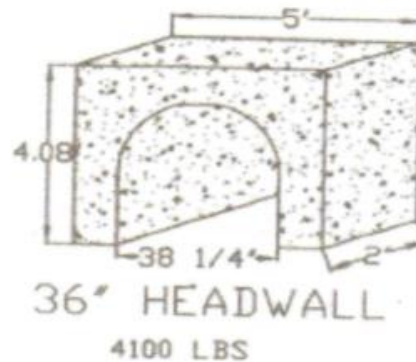
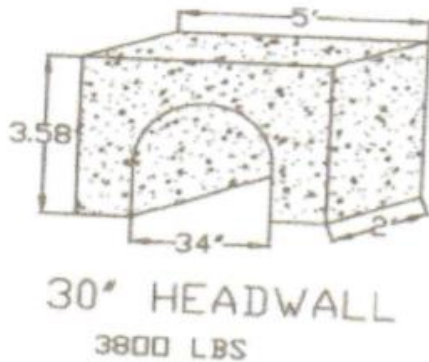
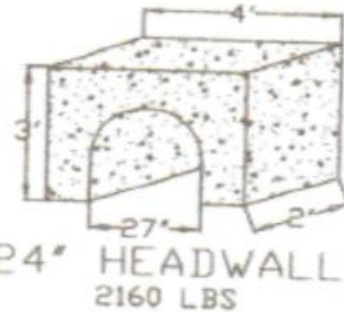
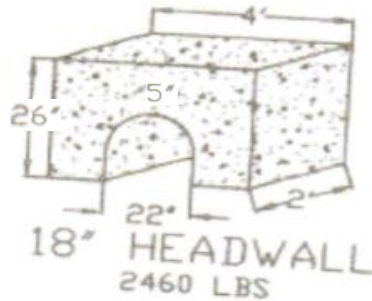
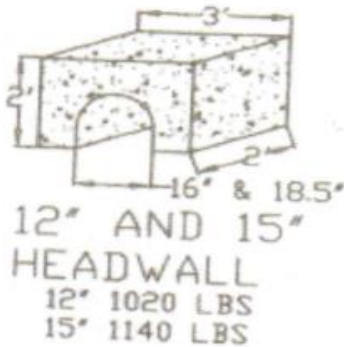
### LOCATIONS:

206 W. Water St. Addison, NY 14801 (607) 359-3436  
1229 Lowman Road, Lowman, NY 14861 (607) 737-0281

## 2020 PRICE SHEET FOR HEADWALLS



**Custom Mix Concrete, Inc.**  
Your Full Service Concrete Supplier



SHOWN: 12', 15", 18", 24", 30" & 36" HEADWALLS

### 4000 PSI CONCRETE WITH REINFORCED BARS. USED FOR PIPE CULVERTS

<u>DIMENSIONS</u>	<u>WEIGHT</u>	<u>PRICE</u>
FITS 12" OR 15" STORM PIPE	1,020 LBS. & 1,140 LBS.	\$ 160.00
FITS 18" STORM PIPE	2,160 LBS.	\$ 200.00
FITS 24" STORM PIPE	2,460 LBS.	\$ 220.00
FITS 30" STORM PIPE	3,800 LBS.	\$ 335.00
FITS 36" STORM PIPE	4,100 LBS.	\$ 405.00

SALES TAX AND DELIVERY CHARGE ADDED TO ABOVE COSTS.

<u>*DELIVERY</u>	<u>HOURLY RATE</u>
BOOM TRUCK	\$100.00 /HR.
TRACTOR TRAILER	\$125.00 /HR.

\*Delivery Starts at time of load to time truck gets back to our shop.

#### CONTACT INFORMATION:

President - John Pipher (607) 481-1222

Concrete Division Manager - Jeremiah Stowell (607) 425-5649

Sales Representative: Rick Hitchcock (607) 731-9248

Block Shop Manager: Kelly Crane-Donley (607) 769-7833

#### LOCATIONS:

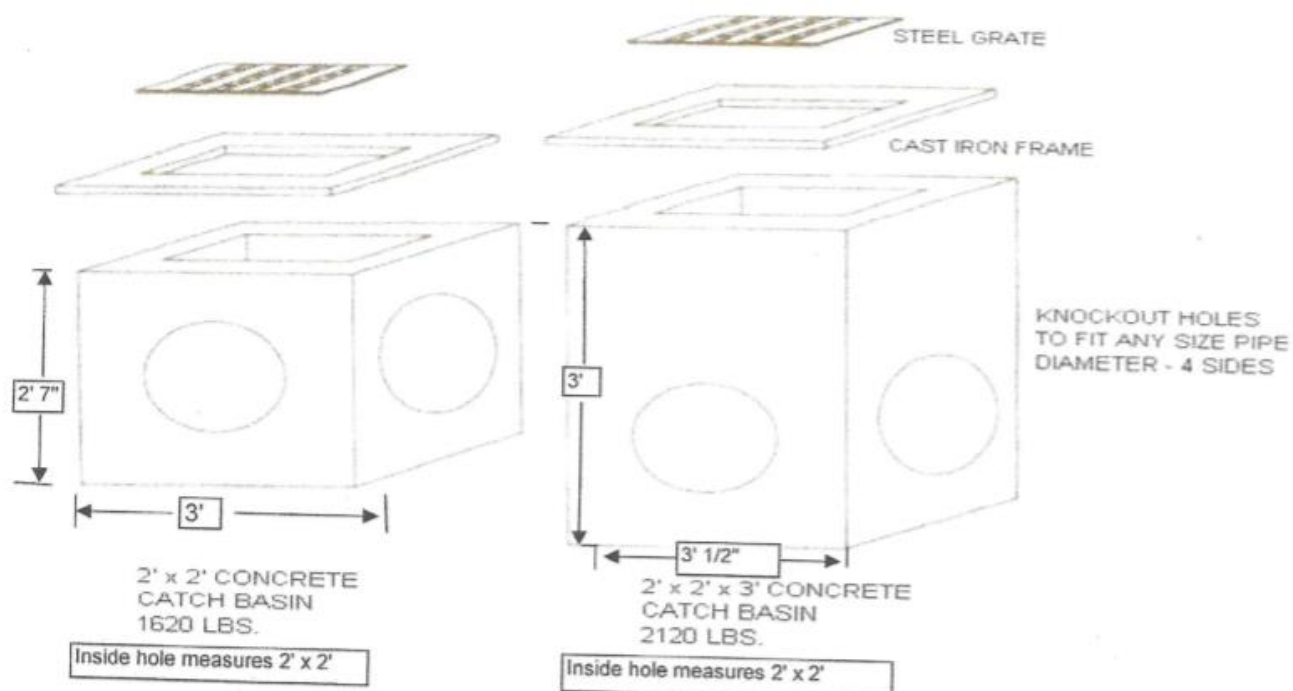
206 W. Water St. Addison, NY 14801 (607) 359-3436

1229 Lowman Road, Lowman, NY 14861 (607) 737-0281

## 2020 PRICE SHEET FOR CATCH BASINS



**Custom Mix Concrete, Inc.**  
*Your Full Service Concrete Supplier*



USED FOR STORM DRAINAGE APPLICATIONS, 2' x 2' OUTSIDE DIAMETER, 6" CONCRETE WALLS, 3500 PSI CONCRETE WITH REINFORCED BARS.

### DIMENSIONS:

**2' x 2' x 2' CONCRETE CATCH BASINS**  
INCLUDES STEEL FRAME & GRATE  
CATCH BASIN ONLY  
FRAME & GRATE ONLY

**WEIGHT**  
**1,620 LBS.**

**PRICE**  
**\$625.00/EA.**

**2' x 2' x 3' CONCRETE CATCH BASINS**  
INCLUDES STEEL FRAME & GRATE  
CATCH BASIN ONLY  
FRAME & GRATE ONLY

**2,120 LBS.**

**\$255.00/EA**  
**\$390.00/EA**  
**\$675.00/EA.**  
**\$305.00/EA**  
**\$390.00/EA**

SALES TAX AND DELIVERY CHARGE ADDED TO ABOVE COSTS.

*DELIVERY	HOURLY RATE
BOOM TRUCK	\$100.00 /HR.
TRACTOR TRAILER	\$125.00 /HR.

### CONTACT INFORMATION:

President - John Pipher (607) 481-1222  
Concrete Division Manager - Jeremiah Stowell (607) 425-5649  
Sales Representative: Rick Hitchcock (607) 731-9248  
Block Shop Manager: Kelly Crane-Donley (607) 769-7833

### LOCATIONS:

206 W. Water St. Addison, NY 14801 (607) 359-3436  
1229 Lowman Road, Lowman, NY 14861 (607) 737-0281

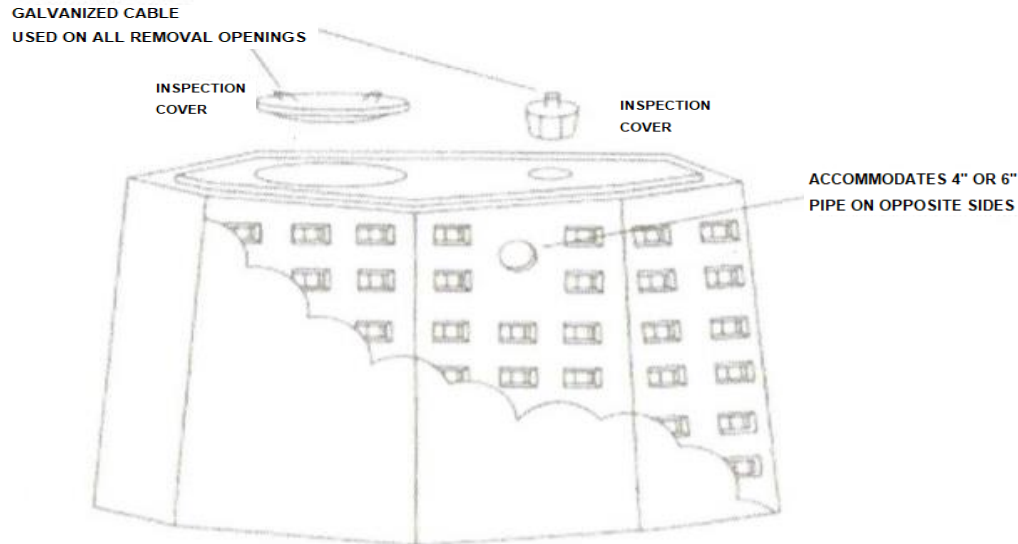
\*Delivery Starts at time of load to time truck gets back to our shop.

# 2020 PRICE SHEET FOR DRYWELL TANKS



**Custom Mix Concrete, Inc.**  
Your Full Service Concrete Supplier

## SHOWN: 600 GALLON CHAMBER TANK



### OCTAGON CONCRETE CHAMBERS: DRYWELLS

(500 GALLON TO BE ADDED - DAVE MILLER)

DESCRIPTION	WEIGHT	HEIGHT	BOTTOM DIMENSION	HEIGHT TO CENTER OF INLET	INTERIOR VOLUME (GALLONS)	PRICE
1000 GALLON	3,530 LBS.	75"	74"	69"	1,000	\$600.00
600 GALLON	2,500 LBS.	43"	77"	37"	600	\$510.00
300 GALLON	1,800 LBS.	34"	73"	27"	300	\$380.00

### DRYWELL COVERS: (NOTE: DRYWELL COVERS HAVE 16" HOLE AND ARE 7 - 9" THICK)

5' DRYWELL COVER	\$115.00
6' DRYWELL COVER	\$125.00
8' DRYWELL COVER	\$175.00

SALES TAX AND DELIVERY CHARGE ADDED TO ABOVE COSTS.

*DELIVERY	HOURLY RATE
BOOM TRUCK	\$100.00 /HR.
TRACTOR TRAILER	\$125.00 /HR.

### CONTACT INFORMATION:

President - John Pipher (607) 481-1222

Concrete Division Manager - Jeremiah Stowell (607) 425-5649

Sales Representative: Rick Hitchcock (607) 731-9248

Block Shop Manager: Kelly Crane-Donley (607) 769-7833

### LOCATIONS:

206 W. Water St. Addison, NY 14801 (607) 359-3436

1229 Lowman Road, Lowman, NY 14861 (607) 737-0281

\*Delivery Starts at time of load to time truck gets back to our shop.